



Siri Berg, *It's All About Color III - Reds* (SBE 1517-1525), 2012 ca. Oil on canvas, 20 x 102 x 2"

***Geometric Shapes and Color:  
In Service To Form, Motion, Pattern, Depiction, Memory, And  
Abstraction***

**Presenting Artworks By:**

**Siri Berg  
Bettina Blohm  
Sonia Gechtoff  
Jeremy Gilbert-Rolfe  
James Kelly  
Dee Shapiro  
Oli Sihvonen  
Gary Stephan  
Thornton Willis**

**October 17 to November 16, 2023**

**Reception: Thursday, November 2 from 6:00 PM to 8 PM**

**CHELSEA LOCATION  
508 West 26th Street, Suite 9F**

**David Richard Gallery, LLC  
526 West 26 Street, Suite 311 | New York, NY 10001  
P: (212) 882-1705  
[www.davidrichardgallery.com](http://www.davidrichardgallery.com)**

David Richard Gallery is pleased to present, Geometric Shapes and Color: In Service to Form, Motion, Pattern, Depiction, Memory, and Abstraction, a group exhibition including artists: Siri Berg, Bettina Blohm, Sonia Gechtoff, Jeremy Gilbert-Rolfe, James Kelly, Dee Shapiro, Oli Sihvonen, Gary Stephan, and Thornton Willis. Most of the artists live and work in New York, except for Blohm who also has a studio in Berlin and Jeremy Gilbert-Rolfe who has lived and worked in California and Florida. Most of the artists are on the roster and exhibit regularly with the Gallery. However, this exhibition marks the debut presentation for Bettina Blohm and Gary Stephan.

The artworks in this presentation are handmade, they are painterly, and the artist's hand is ever present. Precise execution of each stroke and mark is not as important as the basic shapes and color as well as the artist's influences and underlying concepts. The compositions and individual artworks are often process-driven, focused on formalist concerns and pure abstraction, while full of meaning and content despite their otherwise non-objective appearance. The objectives of each artist with respect to their compositions and individual artworks range from concepts and interests such as: form, motion, pattern, depiction, memory, and non-representational abstraction.

There are 30 artworks in this exhibition with 22 installed on the walls and all presented in the digital online catalog.

#### About David Richard Gallery:

In 2015 David Richard Gallery launched DR Art Projects to provide a platform for artists of all stripes—international, national, local, emerging and established—to present special solo projects or to participate in unique collaborations or thematic exhibitions. The goal is to offer a fresh look at contemporary art practice from a broad spectrum of artists and presentations. The Gallery opened its current location in New York in 2017.

Since its inception in 2010, David Richard Gallery has produced museum quality exhibitions that feature Post War abstraction in the US. The presentations have addressed specific decades and geographies as well as certain movements and tendencies. While the gallery has long been recognized as an important proponent of post-1960s abstraction—including both the influential pioneers as well as a younger generation of practitioners in this field—in keeping with this spirit of nurture and development the gallery also presents established artists who embrace more gestural and representational approaches to the making of art as well as young emerging artists.

Artworks Copyright © Siri Berg, Bettina Blohm, Sonia Gechtoff, Jeremy Gilbert-Rolfe, James Kelly, Dee Shapiro, Oli Sihvonen, Gary Stephan, and Thornton Willis  
Courtesy David Richard Gallery.



Siri Berg  
***It's All About Color III - Reds (SBE 1517-1525)***

2012 ca  
Oil on canvas

20 x 102 x 2"

Nine separate paintings installed in a row 20 x 10 x 1.5 inches per Each of 9 paintings



Siri Berg  
***Pinwheel II (SBE1289)***

2005

Oil on canvas

14 x 14"



Siri Berg  
***Pinwheel III (SBE1291)***

2005

Oil on canvas

14 x 14"

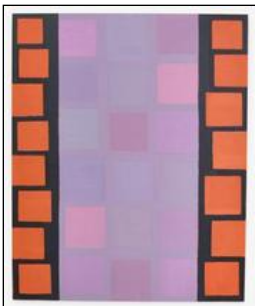


Bettina Blohm  
***Ascension***

2023

Oil on linen

48 x 48"

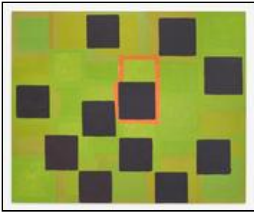


Bettina Blohm  
***Gateway***

2023

Oil on linen

65 x 53"



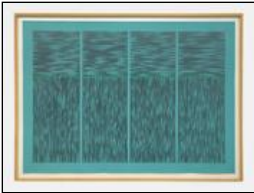
Bettina Blohm  
**Lost Cities**  
2023  
Oil on linen  
53 x 65"



Sonia Gechtoff  
**Blue Facade**  
1976  
Acrylic and graphite on paper  
28.5 x 20.5"  
Framed size - 34.25 x 26.25 x 1



Sonia Gechtoff  
**Square Pale Green Window**  
1976  
Acrylic and graphite on paper  
12 x 12"  
Framed size - 17 x 17 x 1



Sonia Gechtoff  
**Viridian IV**  
1977  
Acrylic and graphite on paper  
30.50 x 42.50"  
Framed size - 33.5 x 46 x 1.5



Jeremy Gilbert-Rolfe  
**(t)here**  
2018  
Oil on linen  
44 x 38"



Jeremy Gilbert-Rolfe  
***Deliberate***  
2019  
Oil on linen  
63 x 44"



Jeremy Gilbert-Rolfe  
***Five Times During The Day, 2 - Late Morning***  
2015  
Oil on linen  
46 x 46"  
Five Times During The Day Series



James Kelly  
***Untitled***  
1994  
Oil stick on paper  
19 x 15"  
Framed size - 24" x 20"



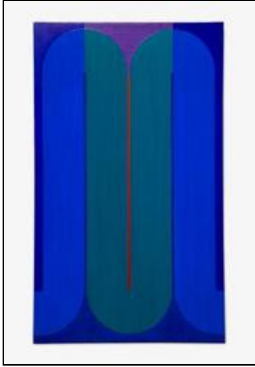
James Kelly  
***Untitled***  
1994  
Oil stick on paper  
19 x 15"  
Framed size - 24" x 20"



James Kelly  
***Untitled***  
Watercolor on paper  
15 x 15"



James Kelly  
**Untitled**  
Watercolor on paper  
15 x 15"



James Kelly  
**Untitled Blue (Filament Series)**  
1965  
Acrylic on canvas  
37 x 22 x 1.75"



Dee Shapiro  
**Cornered**  
1975-6  
Watercolor on graph paper  
40 x 40"  
Framed in clear plexiglass: 40 x 40"

Shapiro, a woman artist whose early Systemic Pattern paintings were rooted in the Fibonacci progression, geometry and color. Later she explored biomorphic forms, integrated pattern work and added collaged elements to continue her explorations in non-objective art with a twist of psychedelic art.



Dee Shapiro  
**Quartet**  
1980  
Watercolor marker, graph paper Image  
24 x 24"  
Framed Size: 32 x 32"

Shapiro, a woman artist whose early Systemic Pattern paintings were rooted in the Fibonacci progression, geometry and color. Later she explored biomorphic forms, integrated pattern work and added collaged elements to continue her explorations in non-objective art with a twist of psychedelic art.



Dee Shapiro  
***Serpentine I***  
1980  
Watercolor marker, graph paper Image  
24 x 36"  
Framed Size: 32 x 44"

Shapiro, a woman artist whose early Systemic Pattern paintings were rooted in the Fibonacci progression, geometry and color. Later she explored biomorphic forms, integrated pattern work and added collaged elements to continue her explorations in non-objective art with a twist of psychedelic art.



Oli Sihvonen  
***Ladder (164)***  
1985  
Oil on canvas  
40 x 36"



Oli Sihvonen  
***Study #337***  
c 1970  
Acrylic on panel  
11.5 x 13.5"



Oli Sihvonen  
***Untitled (294)***  
1980  
Oil on board  
11.25 x 18"

Sihvonen painted hard edge and geometric paintings. This painting is a study for his "Ladder" series, which combined geometric shapes and repeated fragments of those shapes combined with vibrational colors and optical and illusory effects to create the sensation of motion in a two-dimensional picture.



Oli Sihvonen  
***Untitled (41)***  
1987  
Oil on canvas  
43 x 48"



Gary Stephan  
**2.3.4**  
2016  
Acrylic on canvas  
30 x 30"



Gary Stephan  
**CN8**  
2015  
Acrylic on canvas  
20 x 20"



Gary Stephan  
**IGNATZ**  
2015  
Acrylic on canvas  
20 x 20"



Gary Stephan  
**X**  
2015  
Acrylic on canvas  
20 x 20"



Thornton Willis  
**Pebble Beach**  
1985  
Acrylic on canvas  
10 x 14 x 1"



Thornton Willis  
**Shavano**  
1977  
Acrylic on canvas  
12 x 16 x 1"





Thornton Willis  
***Star Pull***  
2003  
Oil on canvas  
24 x 18"



Thornton Willis  
***Untitled Study (Yellow, Peach, Blue on Black)***  
1979  
Acrylic on canvas  
11 x 14 x 1"